

Pest Control - Risk Assessment Examples

A SIGHTING OF RODENTS, ALIVE OR DEAD

3=yes, 0=no

3



B RODENT DROPPINGS PRESENT

3=yes, 0=no

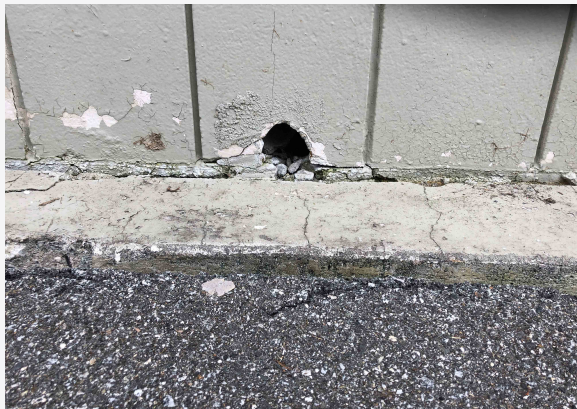
3



C SIGNS OF RODENTS PRESENT, INCLUDING BURROWS, GNAW MARKS, RUB MARKS OR HOLES

2=yes, 0=no

2



D RODENT CONDUCTIVE LANDSCAPING: DENSE GROUND COVER/TALL GRASS, CLOSE TO BUILDING

Dense vegetative ground cover in close proximity to building

3



Less dense cover, further proximity

2



Limited ground cover

1



E STRUCTURAL VULNERABILITIES

Older buildings, visible gaps in walls, corners, doors, no proofing

3



Worn proofing or cracks, potential for vulnerabilities

2



New, solid construction and/or rodent proofing

1



F GENERAL CLEANLINESS

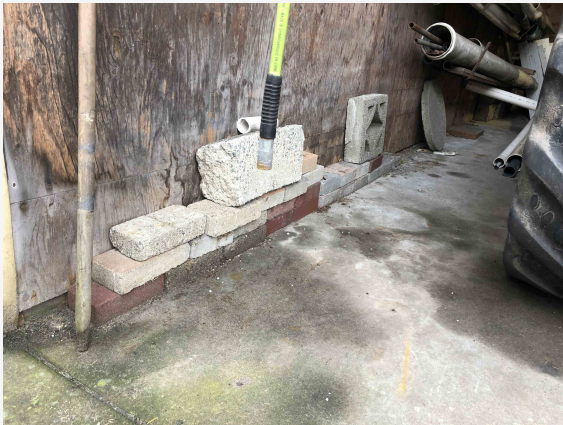
Poor cleanliness

3



Medium cleanliness

2



Good cleanliness

1

